

# BIO GREEN PHYTOREST

Turn Back Your Age Clock



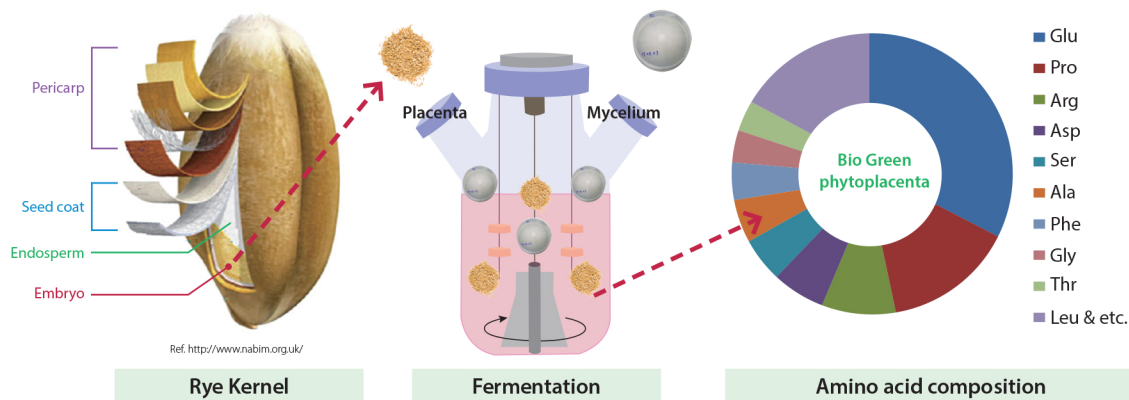
## How can we maintain healthy skin and prevent skin aging?

### The nutritional value of immature grain and its placenta.

Cereal grains are grown in greater quantities than other types of crops and provide more food energy and functional material around the world. Among them, rye can grow well on unfavorable soils where other crops can not grow, and is resistant to cold. The immature rye has a higher nutritional value compared to ripened grains, especially protein and polysaccharide. Furthermore, protein shows a higher content in rye placenta, and it can be utilized for skin health.

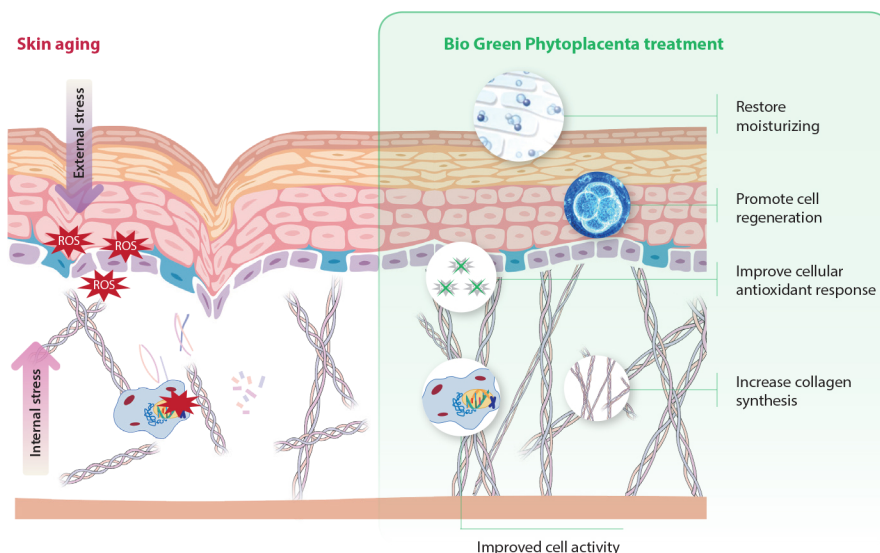
### Bio Green Phytoreset restores the skin vitality by supplying green energy

Dermalab has developed a hydrolyzed rye phytoplacenta extract through our own hydrolysis technology fermenting immature rye placenta with shiitake mushroom mycelia (Patent : KR 10-1810410). Fermented immature rye placenta has higher amino acid composition (such as Glutamic acid, Proline, Arginine, Aspartic acid, Serine, Alanine, Phenylalanine, Glycine) than other grains. A higher contents of amino acid can strengthen skin moisturizing and collagen production.



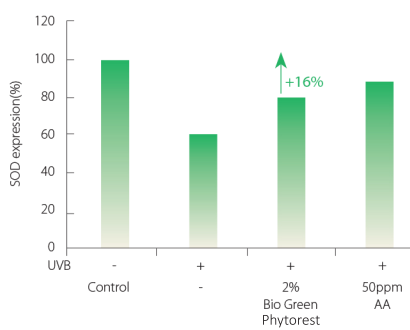
### Bio Green Phytoreset enhances nutrient supply to skin and increases self-regeneration energy.

Busy life cycle such as stress, fatigue, lack of sleep, unbalanced diet and etc. burns out self-regenerating energy of skin. This phenomenon leads to the metabolism instability by oxidative radicals induction and DNA damage in skin cells. Instable metabolism reduces hydration and collagen production in skin, and promotes skin aging such as wrinkles, dull skin, and lack of elasticity.

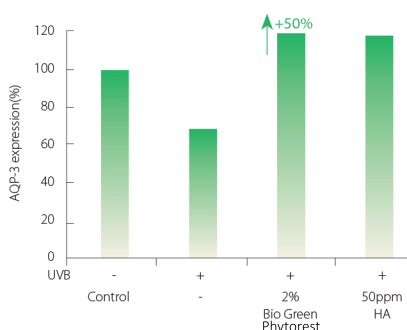


- Protects skin from oxidative stress by increasing SOD expression.
- Improves skin moisturization by increasing AQP-3 expression.
- Increases skin elasticity by increasing collagen expression.

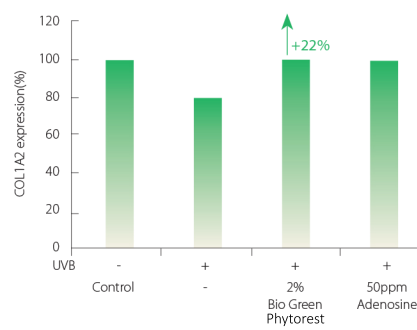
## IN-VITRO : Protect Skin Cell from Oxidation and Enhance Regeneration



BIO GREEN PHYTOREST INCREASES SOD EXPRESSION

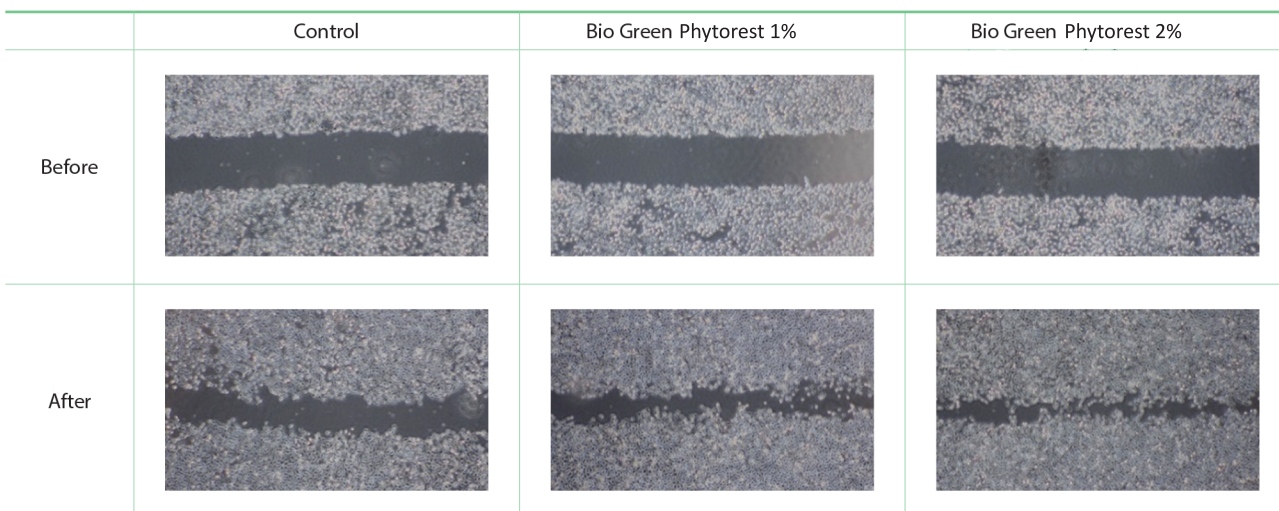


BIO GREEN PHYTOREST INCREASES AQP3 EXPRESSION

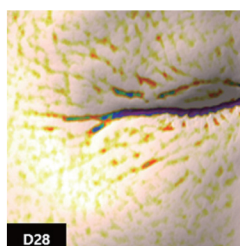
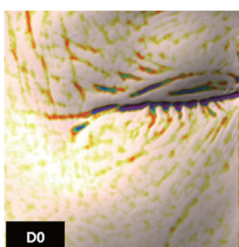


BIO GREEN PHYTOREST INCREASES COL1A2 EXPRESSION

### BIO GREEN PHYTOREST PROMOTES THE REGENERATION OF KERATINOCYTE



## IN-VIVO : Anti-Wrinkle Effect



### BIO GREEN PHYTOREST ERASES SIGNS OF AGEING.

**Method :** Apply 2% Bio Green Phytorest Serum for 28 days, and evaluate wrinkles of eye contour with Antera 3D (Miravex Limited).

**Bio Green Phytorest decreases crow's feet -8.0% on average and up to -10.1%**

<b>Cosmetic activities</b>	<ul style="list-style-type: none"> <li>• Increase of SOD expression</li> <li>• Increase of AQP-3 expression</li> <li>• Increase of COL1A2 expression</li> <li>• Enhancement of Cell regeneration</li> <li>• Reduction of Skin wrinkle</li> </ul>
<b>INCI name</b>	Water (and) Butylene Glycol (and) 1,2-Hexanediol (and) Hydrolyzed Rye Phytoplacenta Extract (and) Lentinus Edodes Mycelium Extract
<b>Recommended % of use</b>	2%